



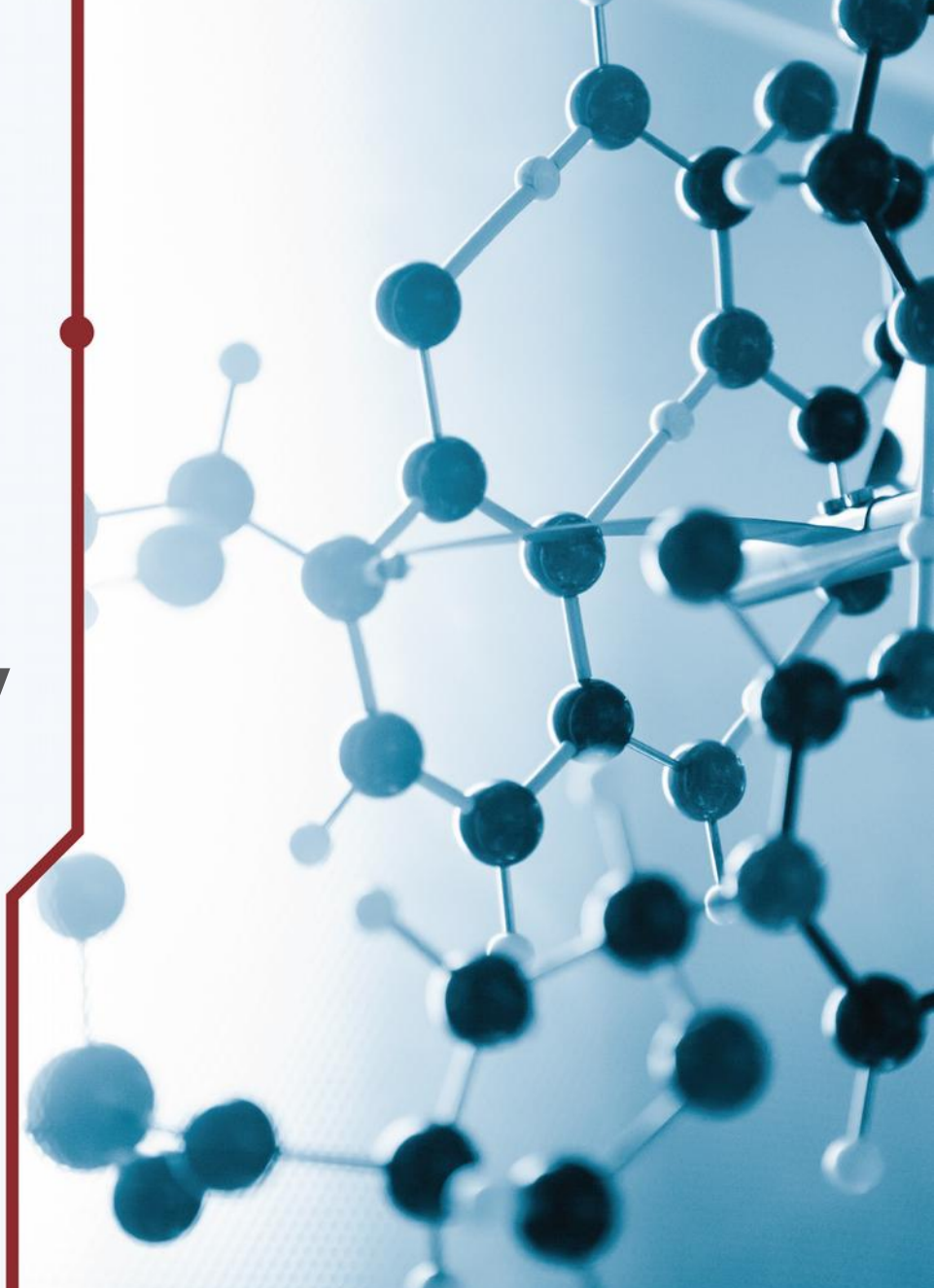
REINFORCE

REsearch INfrastructures FOR Citizens in Europe

WP 6

Muons for geosciences & archaeology

- D6.1 CR Analysis dataset (M11, CNRS)
- D6.2 CR Analysis tools (M18, CNRS): Citizen scientists' and machine learning analysis tools
- D6.3 Citizen Science Projects on CR (M18, CNRS) : develop a demonstrator
- D6.4 Comparative Study on CR Data (M32, CNRS)



WP6 work in progress

✓ General WP management :

On-going selection of post-doc candidate (2 identified)

✓ Article (27-31 January) :

« **Beyond the surface : how cosmic rays impact on society** »



WP6 work in progress

✓ D6.3 (demonstrator) :

- Done « TASK ANALYSIS OF CITIZENS SCIENCE PROJECTS » for WP2
- Demonstrator name : « **COsmic Muons Images for Citizens (COMICs)** »
- First design for low cost / consumption autonomous detector
- First tenders launched for material purchase

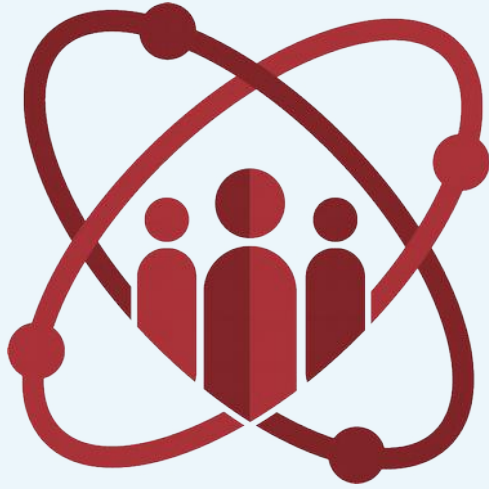
✓ D6.2 (analysis tools) :

- Data analysis started : conversion from ROOT to python
- Sonification already tested for the « IL RITMO DELLO SPAZIO » exhibition
- Environmental characterization (P / T) and correlation with VIRGO noise

✓ D6.1 (analysis sets) :

- First thoughts on the integration of the dataset to Zooniverse (raw / filtered data ? Images ?)
- Data selection among former volcanologic datasets





REINFORCE

REsearch Infrastructures FOR Citizens in Europe

JOIN OUR COMMUNITY



reinforceeu.eu



[/company/
reinforceeu](https://www.linkedin.com/company/reinforceeu)



[@ReinforceEU](https://twitter.com/ReinforceEU)

