

# Organizational structure: WG summary (1/3)

- Starting point: schematics on the right

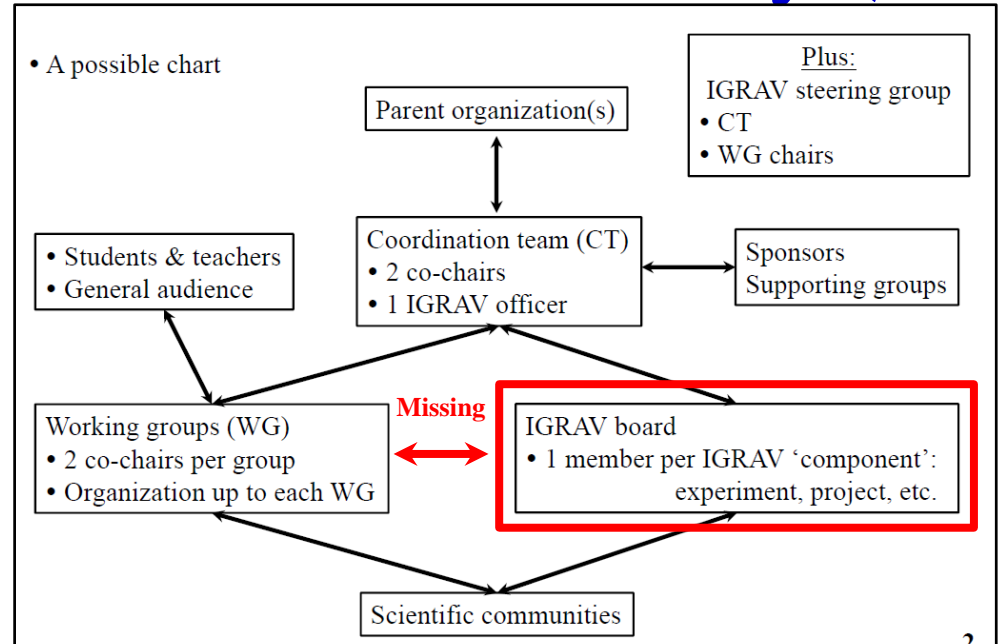
- Board should be opened to all groups/experiments willing to join

- Each 'component' will nominate one person for the board

- Start with an initial list (not complete) and then ask for other groups to join
  - Initial call should make sure the board is inclusive
  - Announcement should be sent as broadly as possible

- Make people know IGRAV exists
  - Go beyond LIGO/Virgo and LISA

- How to include individual people working in small groups?
  - Not part of big collaborations
  - Have ISGRG help for that?



# Organizational structure: WG summary (2/3)

- Merging steering group and coordination team  
→ The steering group will be the main body that includes the CT

- What next?

- Parent organization
- Steering group / CT
- First board meeting to

be widely announced – in about 6 months from now: late January!?

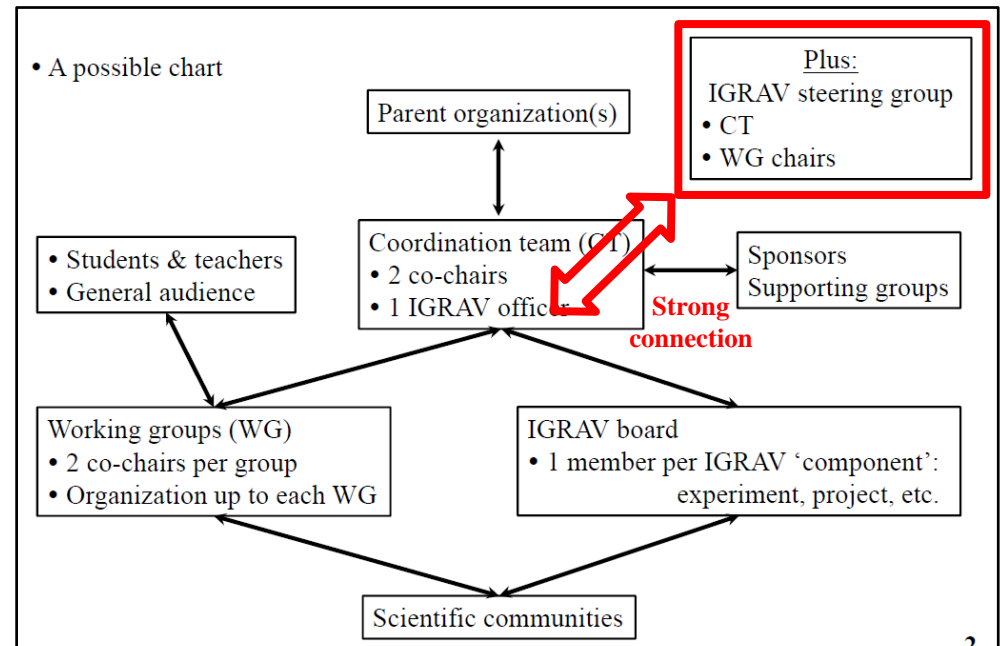
- ◆ Remotely

- ISGRG is a legal entity => should be the parent organization

- Keep contact with GWIC
- But IGRAV broader than gravitational waves
- Advertising through IAU as well

- Make sure to reach out all regions

- Including Africa



# Organizational structure: WG summary (3/3)

- Next general meeting: Summer 2021 – Amaldi!?
  - Allow good quality remote participation
  - Suggestion to avoid parallel sessions
    - ◆ Hard to cope with timezones
    - ◆ Need to limit the duration of the remote meeting

# IGRAV working group: organisational structure

- ~~A possible chart~~ Version 2

