

EIB Session: Introduction

Stefano Bagnasco (INFN Torino), Patrice Verdier (IP2I Lyon – IN2P3)

ET Symposium – Bologna – May 27th, 2025

Organization

DRAMATIS PERSONAE

EIB Chairs: Stefano Bagnasco (INFN), Patrice Verdier (IP2I Lyon - IN2P3)

ET-PP WP8 leaders: Achim Stahl (U. Aachen), Nadia Tonello (BSC)

Division 1: Software, frameworks, and data challenge support
Andres Tanasijczuk (UC Louvain)

Division 2: Services and Collaboration Support
Antonella Bozzi (EGO)

Division 3: Computing and data model, Resource Estimation
Gonzalo Merino (PIC)

Division 4: Multimessenger alerts infrastructure
Steven Schramm (Université de Genève)

TTG: Technology Tracking working Group
Sara Vallerio (INFN Torino)

Task 8.1: TO data center

Leader: Patrice Verdier (IP2I-IN2P3)

Task 8.2: Computing and Data Model

Leader: Paul Laycock (Geneva)

Task 8.3: Resources

Leader: Silvio Pardi (INFN Napoli)

Task 8.4: Data Access

Implementation

Leader: Nadia Tonello (BSC)

Liaison with OSB Div. 10: John Veitch (University of Glasgow), Elena Cuoco (Bologna)

Joint ET-PP WP8 & ETC-EIB management (e.g., weekly call for coordination)



EIB & Computing | Stefano Bagnasco, INFN

ET Annual Meeting - Warsaw, November 12, 2024 | 3/1260 CC BY-NC-SA

Strategy

GENERAL STRATEGY

- Use Mock Data Challenge support as “milestones”
 - More about this later
- Use IGWN infrastructure as baseline
 - IGWN uses the European computing centres as an extension of the OSG (which is nonoptimal...)
- Provide “workflow evaluation kits”...
 - Partial functionalities to evaluate tools and architectures
- ...using ESCAPE as the first toolbox
 - But not the only one!
- Develop an R&D program (together with Virgo)
 - We can both benefit from synergies



EIB session

< mar. 27/05 >

Imprimer

PDF

Plein écran


Vue détaillée


Filtre

09:00	<div><div>Introductions</div><div>Room 213</div></div> <div><div>Patrice Verdier et al.</div><div>09:00 - 09:10</div></div>
	<div><div>Div 3 report</div><div>Room 213</div></div> <div><div>Gonzalo Merino et al.</div><div>09:10 - 09:30</div></div>
	<div><div>ET-PP WP8</div><div>Room 213</div></div> <div><div>Nadia Tonello et al.</div><div>09:30 - 09:50</div></div>
10:00	<div><div>Challenges in Multimessenger Astronomy in the ET Era: From Interoperability to Multimodal Generative AI Systems</div><div>Giuseppe Greco</div></div> <div><div></div><div></div></div>
	<div><div>Update on the CTLab4ET deployment</div><div>Room 213</div></div> <div><div>Lia Lavezzi</div><div>10:10 - 10:30</div></div>
	<div><div>GW data analysis on the ESCAPE Virtual Research Environment</div><div>Room 213</div></div> <div><div>Dr Alberto Iess</div><div>10:30 - 10:50</div></div>
11:00	<div><div>Discussion</div><div>Room 213</div></div> <div><div></div><div>10:50 - 11:10</div></div>
	<div><div>The ET Members Database</div><div>Room 213</div></div> <div><div>Gary Hemming</div><div>11:30 - 11:50</div></div>
12:00	<div><div>ETAP + MADDEN status</div><div>Room 213</div></div> <div><div>Federica Legger et al.</div><div>11:50 - 12:10</div></div>
	<div><div>The UK effort for 3G computing</div><div>Room 213</div></div> <div><div></div><div>12:10 - 12:30</div></div>
	<div><div>Discussion</div><div>Room 213</div></div> <div><div></div><div>12:30 - 13:00</div></div>
13:00	

Session

ET e-Infrastructure Board (EIB)

 27 mai 2025, 09:00



 Room 213

Joint OSB+EIB session

<div><div><</div><div>mar. 27/05</div><div>></div></div>	
<div><div>Imprimer</div><div>PDF</div><div>Plein écran</div><div>Vue détaillée</div><div>Filtre</div></div>	
14:00	
	<div><div>Report from EIB Div1</div><div>Rooms 215 & 216</div><div>Andres Tanasijczuk</div><div>14:30 - 14:45</div></div>
	<div><div>Report from OSB Div10</div><div>Rooms 215 & 216</div><div></div><div>14:45 - 15:00</div></div>
15:00	<div><div>Results from MDC1</div><div>Rooms 215 & 216</div><div></div><div>15:00 - 15:15</div></div>
	<div><div>MDC data generation code management</div><div>Rooms 215 & 216</div><div>Steffen Hahn</div><div>15:15 - 15:30</div></div>
	<div><div>EIB Div4 and LL computing model</div><div>Rooms 215 & 216</div><div></div><div>15:30 - 15:45</div></div>
	<div><div>Discussion on MM science and the LL computing model</div><div>Rooms 215 & 216</div><div></div><div>15:45 - 16:00</div></div>
16:00	

Session

OSB & EIB joint session

 27 mai 2025, 14:30
 Rooms 215 & 216

And on Friday morning during the plenary session

	<div><div>ET Data - Mock Data Challenges</div><div>Plenary Room</div><div>Elena Cuoco</div><div>10:20 - 10:40</div></div>
	<div><div>ET Data - ET Data Access Policy and its implementation</div><div>Plenary Room</div><div>Michele Punturo</div><div>10:40 - 11:00</div></div>
11:00	<div><div>Coffee break</div><div>CNR - Bologna Research Area</div><div></div><div>11:00 - 11:30</div></div>
	<div><div>ET Data - EIB: Tools for multi messenger</div><div>Plenary Room</div><div>Steven Schramm</div><div>11:30 - 11:50</div></div>

Hot topics (in random order)

- **Computing Model deliverable** – still some input needed, specially for LL (but you'll see it's more a continuum of different latency requirements)
- How do we collect and fulfil computing power requests (not only for MDCs) ? **And how do we plan these requests with CCs ?**
- ET-IAM, ETMD etc.: **LVK/IGWN is running fast. Do we want/need to collaborate?**
- **Postmortem from MDC1** – what did we learn? What can we do better?
- “Common code” development and management guidelines – starting from MDC dataset generation code
- **Plan for MDC2 support** – what infrastructure do we need/will be able to provide?
- UK has a funded activity for 3G (ET/CE agnostic!), including computing – how do we coordinate?
- **How to involve and onboard all RUs who expressed interest in ET computing & software ?**

Next workshop

"On site infrastructure, computing and data model" for ET, as part of ET-PP WP8

<https://indico.ego-gw.it/event/820/>

June 30 and July 1st at CC-IN2P3 in Lyon

Agenda in preparation

Registration opened



ET-PP WP8 Workshop: On site infrastructure, computing and data model

**EINSTEIN
TELESCOPE**

30 juin 2025 à 1 juillet 2025
Lyon
Fuseau horaire Europe/Paris

Accueil

Inscription

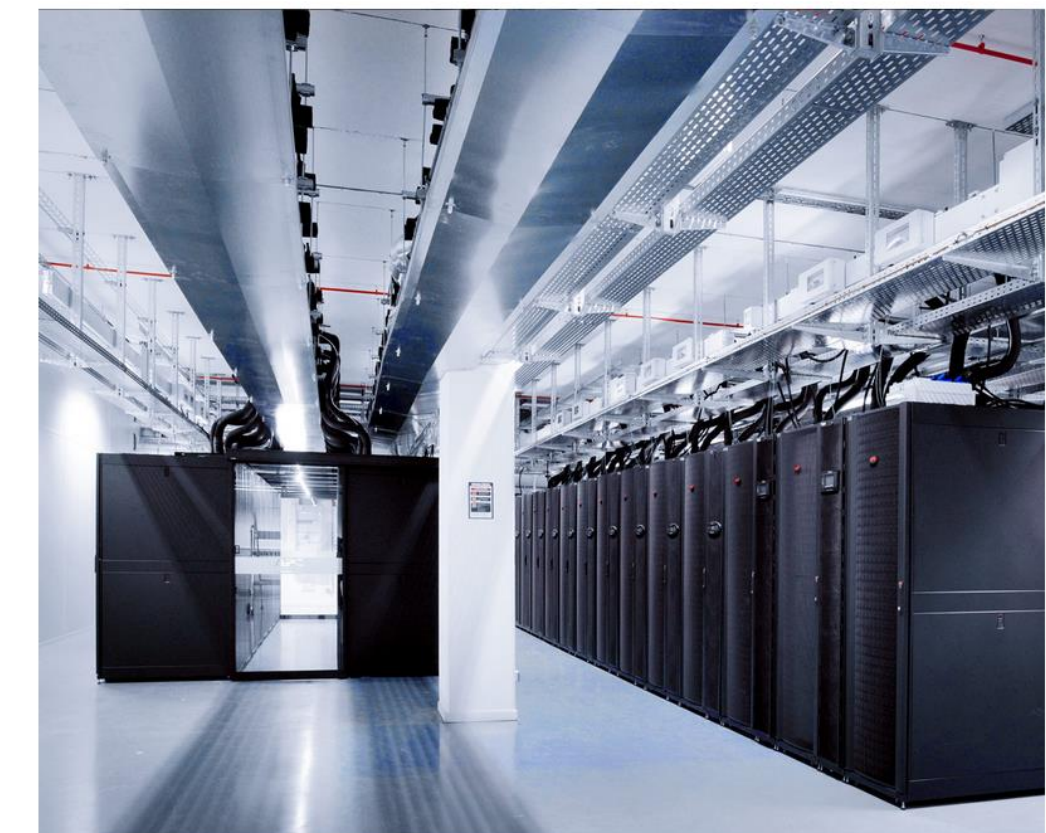
Liste des participants

Link to CC-IN2P3

Contact

✉ patrice.verdier@in2p3.fr

☎ +33 6 13 49 57 51



CC-IN2P3 will host the workshop dedicated to "On site infrastructure, computing and data model" for ET, as part of WP8 of the Einstein Telescope Preparatory Phase Project.

Local organizing team: Eric Fede, Patrice Verdier

EINSTEIN TELESCOPE NEW VISUAL IDENTITY

Consistency builds recognition

- **Adopt the refreshed look.** Use the updated logo, color palette, typefaces, and slide / doc templates in all communications.
- **Check the Brandbook for details.** It explains spacing, color ratios, do's and don'ts, and real-life examples.
- **Pick the right logo version.** Multiple logo variants are provided so you can match the medium, size, and background.
- **Grab the files on the Wiki / ET new website.** All logos, templates, and graphic assets are stored there for easy download.
- **Need help? Ping the Communications team.** We're always happy to review or advise.

The complete guidelines — and a preview of the new website — will be presented in the plenary session (30.05 Friday, 11:50)



et_comm@astrouw.edu.pl